

STRATEGIC MANAGEMENT TEAM



Sharon Kemp
Chief Executive



Jo Brown
Assistant Chief Executive



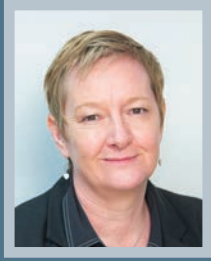
Judith Badger
Strategic Director
Finance & Customer Services



Paul Woodcock
Strategic Director
Regeneration & Environment



Suzanne Joyner
Strategic Director
Children & Young People's Services



Anne Marie Lubanski
Strategic Director
Adult Care & Housing



Chris Burton
Head of Communications
& Marketing



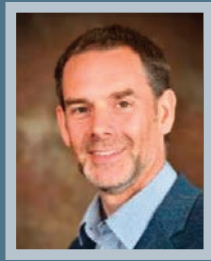
Graham Saxton
(Interim) Assistant Director
Financial Services



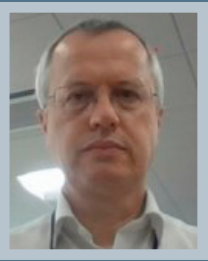
Simon Moss
Assistant Director
Planning Regeneration & Transport



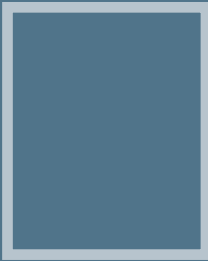
Ailsa Barr
Assistant Director Safeguarding



Ben Anderson
Director
Public Health



Simon Dennis
Acting Head of Performance,
Intelligence & Improvement



Assistant Director
Legal Services



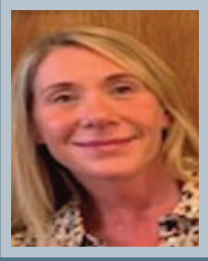
Tom Smith
Assistant Director
Community Safety & Street Scene



David McWilliams
Assistant Director
Early Help & Family Engagement



Nathan Atkinson
Assistant Director
Strategic Commissioning



Emma Hill
Acting Head of
Democratic Services



Luke Sayers
Assistant Director
Customer, Information & Digital



Polly Hamilton
Assistant Director
Culture, Sport & Tourism



Justin Harker-Daniels
Interim Assistant Director
of Commissioning & Performance



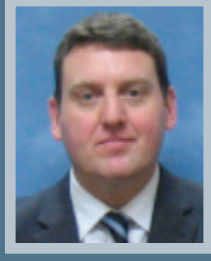
Ian Spicer
Assistant Director
Independent Living & Support



Lee Mann
Assistant Director
Human Resources & OD



Nathan Heath
Education & Skills



Paul Walsh
(Interim) Assistant
Director of Housing



Rob Savage
Acting Head of Change
& Innovation



Tom Bell
Housing Services
Specialist Advisor



Martin Hughes
Head of Neighbourhoods

