



GREAT PLACE TO WORK

**‘Our thoughts and
imagination are the
only real limits to our
possibilities’**

Orison Swett Marden

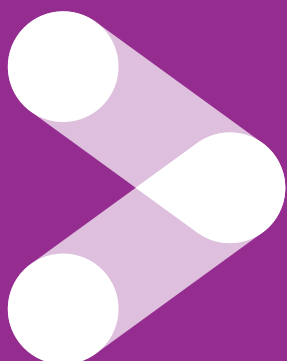


PIER HEALTH GROUP OVERVIEW

2020/21 Highlights

- Underlying Turnover of £13.2 million
- Further development of risk management and governance effectiveness
- Good engagement with partner organisations and proposition development to continue succeeding in a complex primary care environment
- After a passionate start of this Super-Partnership in 2019, a positive outlook awaits us
- The recent service delivery performance, and the health of our balance sheet, gives us the confidence to continue to push forward our vision
- A locality wide first-contact musculoskeletal service developed and delivered
- A central Pharmacy Team that now consists of Pharmacists and Pharmacy Technicians
- Rolled out social prescribing to all Practices within the Primary Care Network
- Worked with the Clinical Commissioning Group to create the High Impact Users project in collaboration with the Red Cross
- Created a secure future for Graham Road Surgery and Horizon Health Centre
- A COVID-19 Vaccination Centre which has delivered circa 140,000 vaccinations, including meeting the needs of c1700 care home patients in 72 homes (twice)
- A clinical leadership team to support clinical ambitions

Useful Websites:



Our website

<https://www.pierhealth.co.uk/>

BNSSG website

<https://bnssgccg.nhs.uk/>

Riverbank Vaccination Centre Website

<https://www.pierhealthcovidvaccination.info/>

PIER HEALTH GROUP OVERVIEW

Background

Pier Health Group was established with the goal of delivering the very best in healthcare across Weston-Super-Mare, Worle and Surrounding Villages within the North Somerset area.

Having united various GP Practices, Pier Health Group is committed to transforming Healthcare for over 100,000 patients, primarily by working together to share knowledge, skills and resources. We are privileged enough to be a PCN as well as a Superpartnership. We all appreciate that historically, traditional models of General Practice have not served Weston-Super-Mare, Worle and Surrounding Villages effectively.

Pier Health Group realised that a new approach was needed to allow collaborative, consistent and resilient General Practice. Designed under a 'coalition of the willing' template, we recognised the need for 'compelling offers' to deliver the best in healthcare across our locality.

We have the luxury of being a Superpartnership as well as Primary Care Network, and feel we are in the right place to deliver transformative care.

PCN Key Facts

- Registered Population
January 2021: 94,308
- Weighted Population
January 2021: 101,709
- 7 practices, 8 sites,
and Riverbank Vaccination Centre
- We have a couple newer Practices
due in the next few years.



EXCITING NEWS FOR 2022



Pier Health Fellowship Opportunities

Effective from August 2022, Pier Health Group will launch a bespoke One Year Fellowship Programme developed exclusively for Newly Qualified GPs and those in the first five years of practice.

This is a fantastic opportunity aimed at aspiring GPs and will combine: mentorship; protected workload; access to training courses; protected dedicated study budget; and other perks.

Fellows will also be granted two session per week fully funded highly flexible CPD time for a range of stimulating projects within Pier Health Group and the PCN. Streams on offer include:

Teaching

Digital
Health

Innovation
& Tech

Substance
Abuse

Green
Health

Academic
Medicine

Leadership

We have a bold vision. Our goal is to give you the very best start to your journey as a GP helping you build a platform for success while having a fulfilling experience.

PIER HEALTH GROUP STRUCTURE

Pier Health Primary Care Network

One Weston Integrated Care Partnership (ICP)

Pier Health PCN

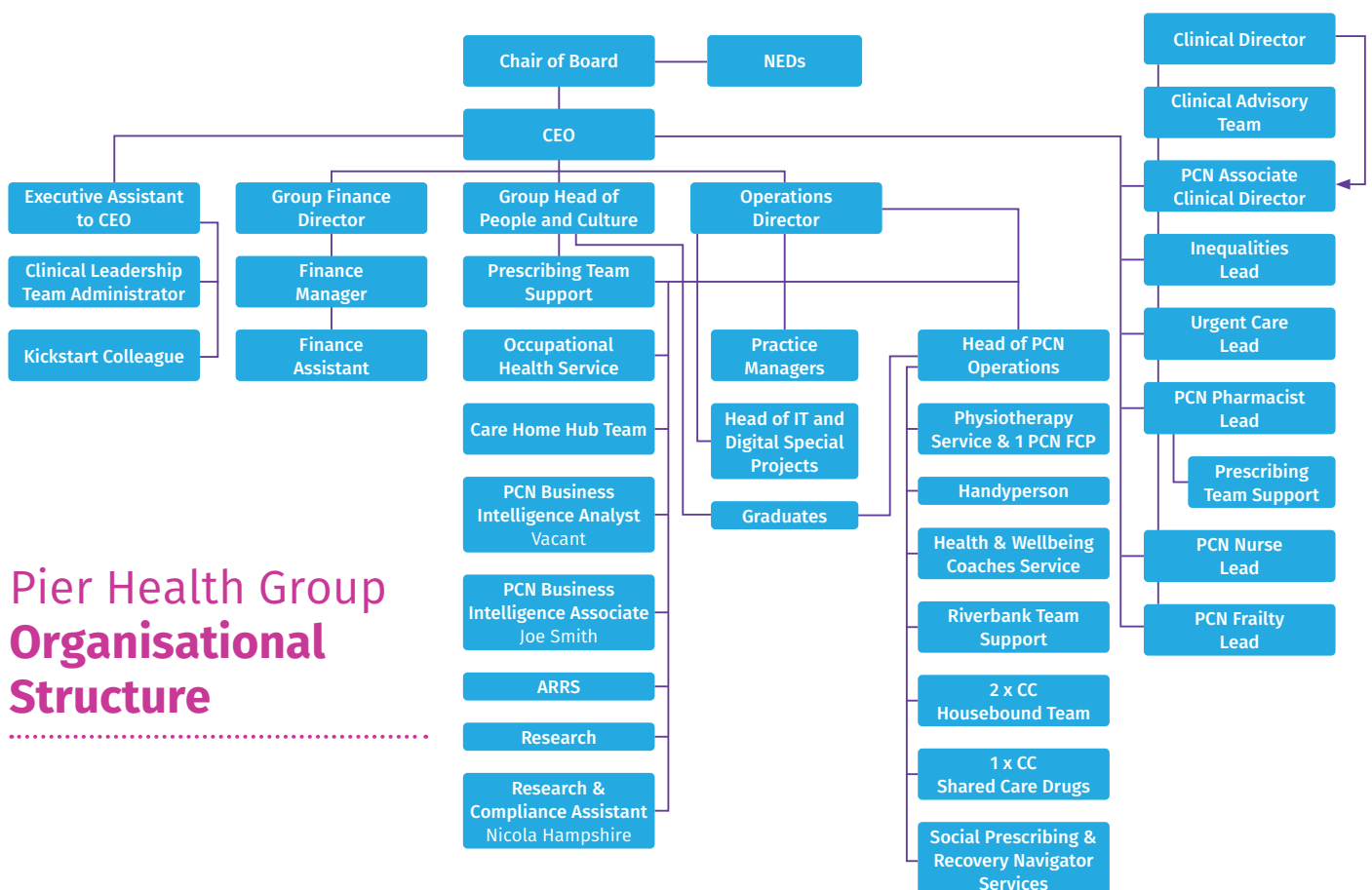
Pier Health Group Superpartnership:

168 Medical Group
Cedars Surgery
Tudor Lodge Surgery
The Milton Surgery
Stafford Medical Group
Winscombe & Banwell Family Practice

Pier Health Group Ltd:

Horizon Health Centre
Graham Road Surgery

Pier Health Group Organisational Structure



OUR FAMILY OF PRACTICES



168 Medical Group



The Cedars Surgery



Graham Road Surgery



Horizon Health Centre



The Milton Surgery

**Riverbank
Medical Centre**

Riverbank Medical Centre



Stafford Medical Group



Tudor Lodge Surgery



Winscombe & Banwell